



Contents lists available at ScienceDirect

journal homepage: <http://www.elsevier.com/locate/clnu>



Department of Gastrointestinal Surgery/Department of Clinical Nutrition, Beijing Shijitan Hospital, Capital Medical University, Beijing, 100038, China  
Beijing International Science and Technology Cooperation Base for Cancer Metabolism and Nutrition, Beijing, 100038, China  
Key Laboratory of Cancer FSMP for State Market Regulation, Beijing, 100038, China  
Department of Epidemiology, College of Public Health, Zhengzhou University, Zhengzhou, 450000, China

ARTICLE INFO

Article history:  
10 y 2022  
18 2022

Keywords:  
fl y  
y fl

SUMMARY

Background and aims: y fl fl y ( ) fl y  
y  
Methods: 6359 y - × / y y  
y y ( ) 95% fl y (x).  
Results: y fi , , fl y  
y fl fi (46.5% 61.0% 83.0%; < .001).  
y fi y (45.7% 69.1%; < .001).  
y 10.3% ( , 1.103; 95% , 1.072–1.136; < .001).  
y , , ( , 1.114; 95% fi , 1.060–1.193; < .001).  
Conclusions: 1.072–1.157; < .001) ( , 1.125; 95% fi fl y  
fl y

© 2022 y

1. Introduction

\* y/ y. - y y 2020, y 30 y 50% 2040  
100038, y  
E-mail address: . . ( . ).  
1 y y

3–5. W  
 6–8.  
 9,10.  
 11,12.  
 13–15.

## 2. Materials and methods

### 2.1. Patients

1800020329),  
 40  
 J 2012 2019.  
 <24 ;  
 6 ;

### 2.2. Data collection and follow-up

2  
 1

### 2.3. Outcomes

16 ;  
 3

### 2.4. Statistical analysis

±  
 -W  
 95% fi  
 P < 0.05  
 4.05 ( :// .- . ).

## 3. Results

### 3.1. Measurements of serum systemic inflammation biomarkers

1  
 1  
 2  
 ( / ) × ( /μ ) / y y ( /μ ) =

( $y$ , 0.649; -  $x$ , 0.648).

### 3.2. Clinicopathological characteristics

6359  
y( 3 ). , 3842  
(60.4%) 2517 (39.6%)  
59.40 ± 11.24 y .  
y fi 16.  
2817 (44.3%) , 3542 (55.7%)  
fi y

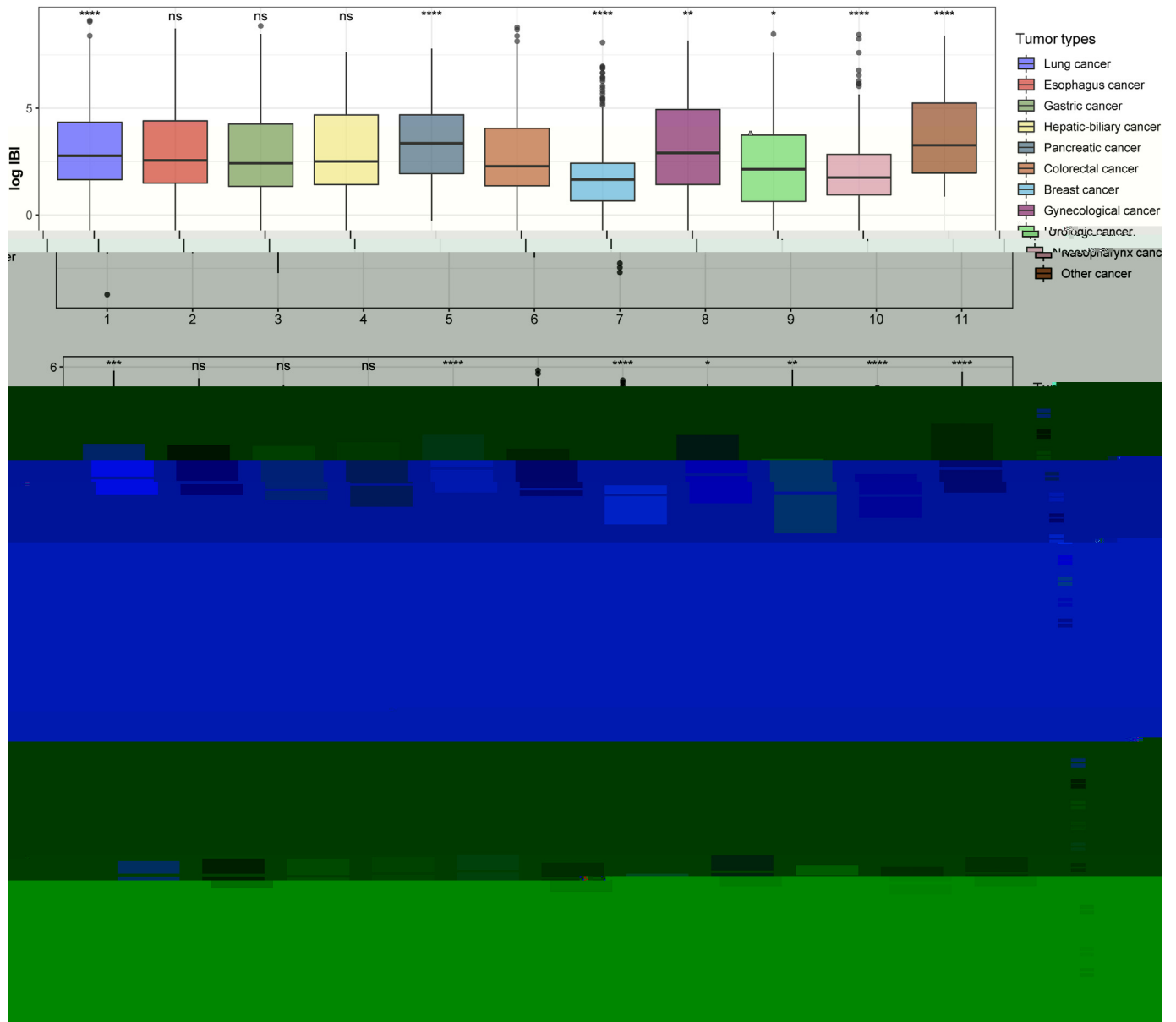


Fig. 1.  $y$  fl  $y$  . : -  $> 0.05$ , \* -  $< 0.05$ , \*\*\*\* -  $< 0.001$ .

fi  $y$  ( , 4.807; 95% , 3.295–7.011; ( , 2.021; 95% , 1.809–2.258;  $P < .001$ ) ( 6  
 -  $P < .001$ ).

3.7. Combination of inflammatory burden and nutrition in the prognosis assessment

$y$  fl  $y$  ( 12 ). fl 33.1% ( , 2.260; 95% , 2.018–2.531;  $P < .001$ ) ( 6  
 fl  $y$  ( 13 ).

3.8. Randomized internal validation

$y$ , (4452  $y$ ) (1907 ), 7:3 ( 7). fi  $y$  ( 3 ). ( , 1.114; 95% , 1.072–1.157; -  $P < .001$ ) ( , 1.125; 95% , 1.060–1.193; -  $P < .001$ ) ( 2).



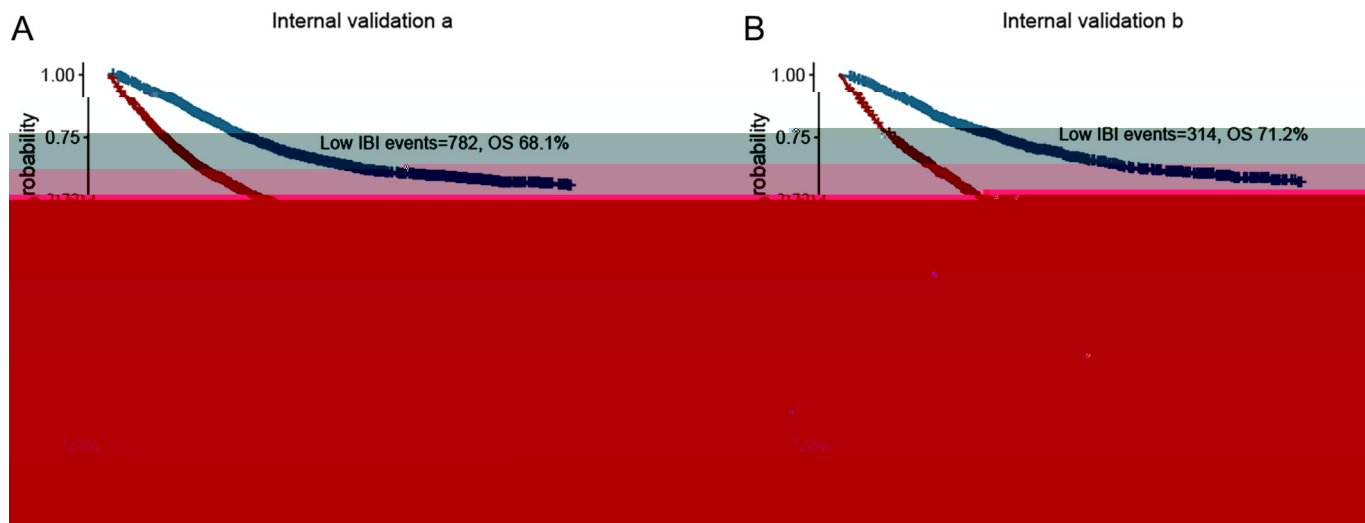


Fig. 3.

Table 2

	fl	y					
( )		1.165 (1.122,1.209)	<0.001	1.103 (1.063,1.145)	<0.001	1.114 (1.072,1.157)	<0.001
1 (<16)			<0.001		<0.001		<0.001
2 (≥16)		2.283 (2.082,2.504)		1.789 (1.629,1.965)		1.666 (1.514,1.832)	
1 (<4.16)							
2 (4.16–11.88)		1.369 (1.178,1.591)	<0.001	1.163 (1.1,1.353)	0.05	1.110 (0.954,1.292)	0.178
3 (11.88–69.09)		2.263 (1.967,2.604)	<0.001	1.655 (1.436,1.907)	<0.001	1.495 (1.295,1.725)	<0.001
4 (≥69.09)		3.209 (2.803,3.675)	<0.001	2.286 (1.991,2.625)	<0.001	2.078 (1.807,2.391)	<0.001
( )		1.146 (1.087,1.209)	<0.001	1.116 (1.054,1.182)	<0.001	1.125 (1.060,1.193)	<0.001
1 (<16)			<0.001		<0.001		<0.001
2 (≥16)		2.485 (2.149,2.874)		1.924 (1.659,2.232)		1.800 (1.547,2.093)	
1 (<3.88)							
2 (3.88–10.44)		1.388 (1.091,1.767)	0.008	1.258 (0.987,1.602)	0.064	1.202 (0.942,1.533)	0.139
3 (10.44–59.47)		2.207 (1.764,2.760)	<0.001	1.698 (1.354,2.13)	<0.001	1.559 (1.240,1.961)	<0.001
4 (≥59.47)		3.525 (2.854,4.354)	<0.001	2.527 (2.036,3.136)	<0.001	2.273 (1.821,2.838)	<0.001
			<0.001		<0.001		<0.001



20 . . . . . y . . . . . y . . . . . :  
y. J 1xV y 2021.

21